

NOTE:
EXACT LOCATION OF SERVICE STUBS
TO BE DETERMINED BY T.U.A.
DEVELOPER WILL CONNECT TO THE
EXISTING WATER MAIN
DEVELOPER WILL INSTALL VALVES
AS DIRECTED BY TUA

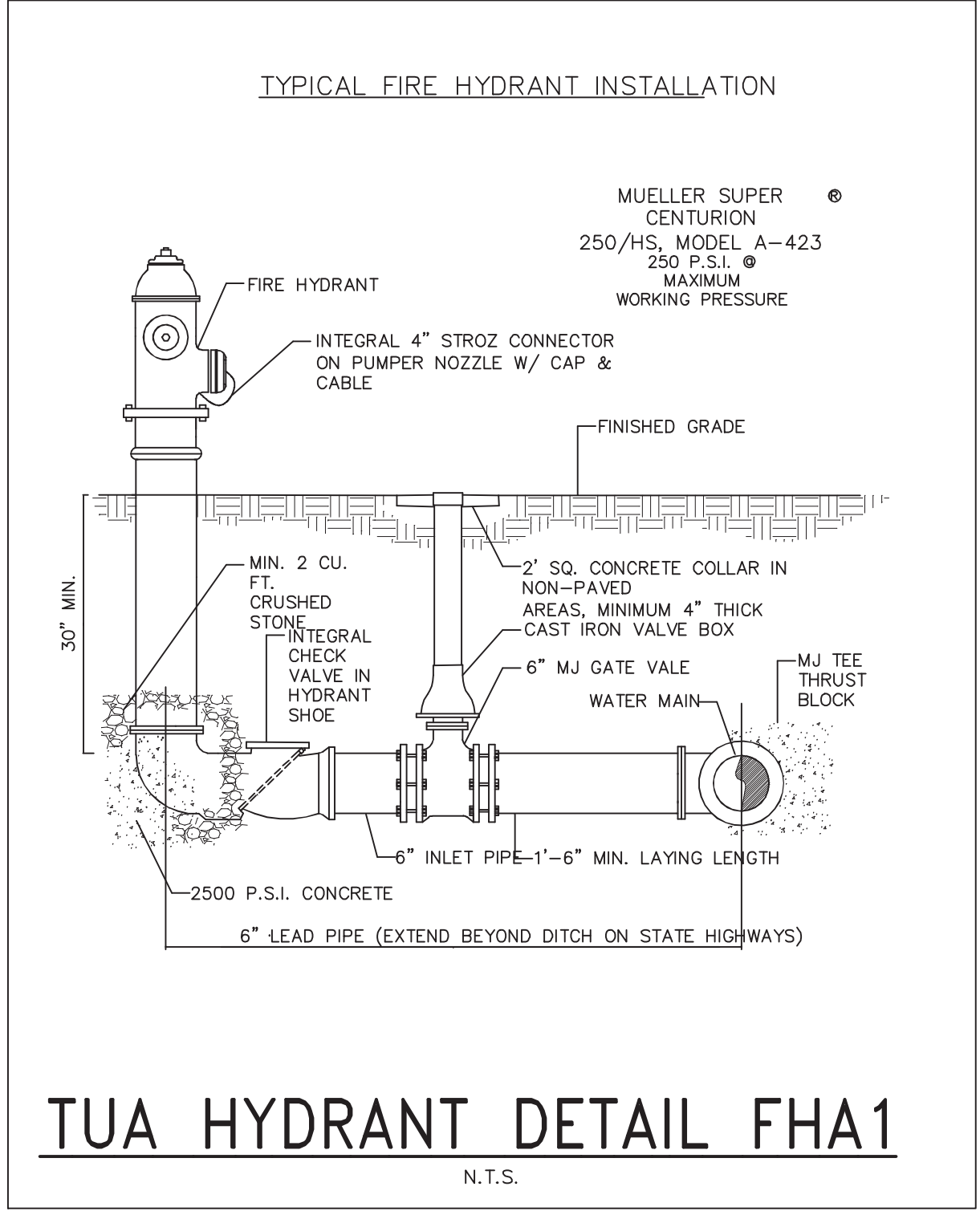
NOTE:
EASEMENTS ARE SHOWN ON THESE CONSTRUCTION PLANS AS
REQUIRED BY THE CITY OF TULLAHOMA. EXACT LOCATION AND
CONFIGURATION OF ALL EASEMENTS ARE TO BE DETERMINED
BY AS-BUILT LOCATIONS AND SHOWN ON THE FINAL PLAT
PREPARED BY A LICENSED SURVEYOR.

PUBLIC WATER LINES AND PUBLIC SEWER LINES SHALL BE
SEPARATED 10' MINIMUM HORIZONTALLY AND 1.5' MINIMUM
VERTICALLY

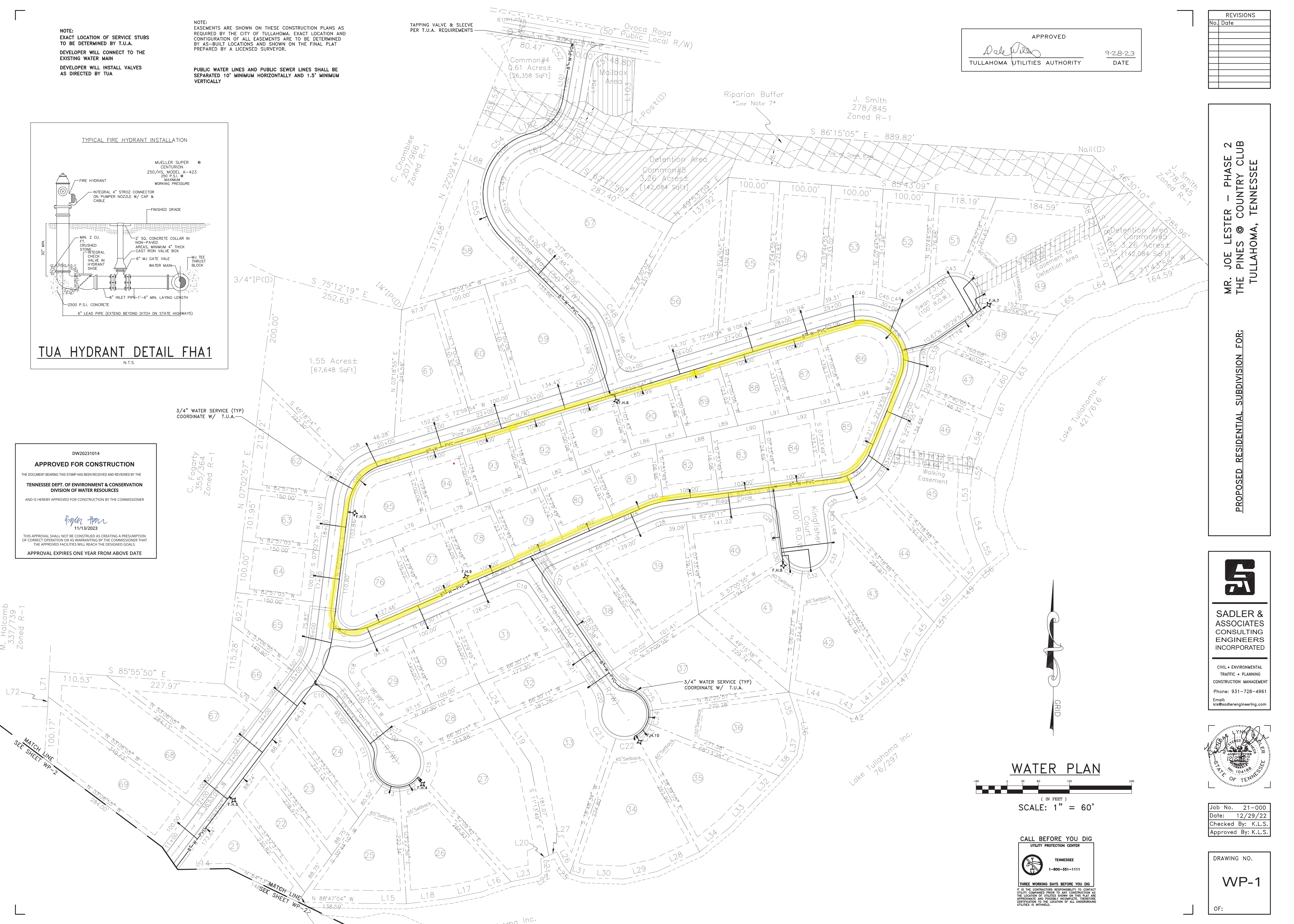
TAPPING VALVE & SLEEVE
PER T.U.A. REQUIREMENTS

APPROVED
Dale Williams
TULLAHOMA UTILITIES AUTHORITY
9-28-23
DATE

REVISIONS	
No.	Date



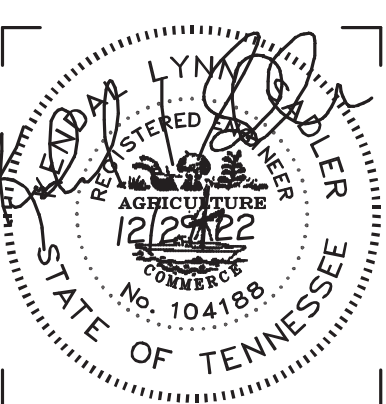
DW20231014
APPROVED FOR CONSTRUCTION
THE DOCUMENT BEARING THIS STAMP HAS BEEN RECEIVED AND REVIEWED BY THE
**TENNESSEE DEPT. OF ENVIRONMENT & CONSERVATION
DIVISION OF WATER RESOURCES**
AND IS HEREBY APPROVED FOR CONSTRUCTION BY THE COMMISSIONER
Roger Hume
11/13/2023
THIS APPROVAL SHALL NOT BE CONSTRUED AS CREATING A PRESUMPTION
OF CORRECT OPERATION OR AS WARRANTING BY THE COMMISSIONER THAT
THE APPROVED FACILITIES WILL REACH THE DESIGNED GOALS.
APPROVAL EXPIRES ONE YEAR FROM ABOVE DATE



MR. JOE LESTER - PHASE 2
THE PINES @ COUNTRY CLUB
TULLAHOMA, TENNESSEE

PROPOSED RESIDENTIAL SUBDIVISION FOR:

SADLER & ASSOCIATES
CONSULTING
ENGINEERS
INCORPORATED
CIVIL • ENVIRONMENTAL
TRAFFIC • PLANNING
CONSTRUCTION MANAGEMENT
Phone: 931-728-4961
Email: kis@sadlerengineering.com



Job No. 21-000
Date: 12/29/22
Checked By: K.L.S.
Approved By: K.L.S.

DRAWING NO.
WP-1
OF:

WATER PLAN



SCALE: 1" = 60'

CALL BEFORE YOU DIG
UTILITY PROTECTION CENTER
TENNESSEE
1-800-351-1111
THREE WORKING DAYS BEFORE YOU DIG
IT IS THE CONTRACTOR'S RESPONSIBILITY TO CONTACT
UTILITY COMPANIES PRIOR TO ANY CONSTRUCTION AS
THE LOCATION OF UTILITIES SHOWN ON THIS PLAN ARE
APPROXIMATE AND POSSIBLY INCOMPLETE. THEREFORE
CERTIFICATION TO THE LOCATION OF ALL UNDERGROUND
UTILITIES IS WITHHELD.